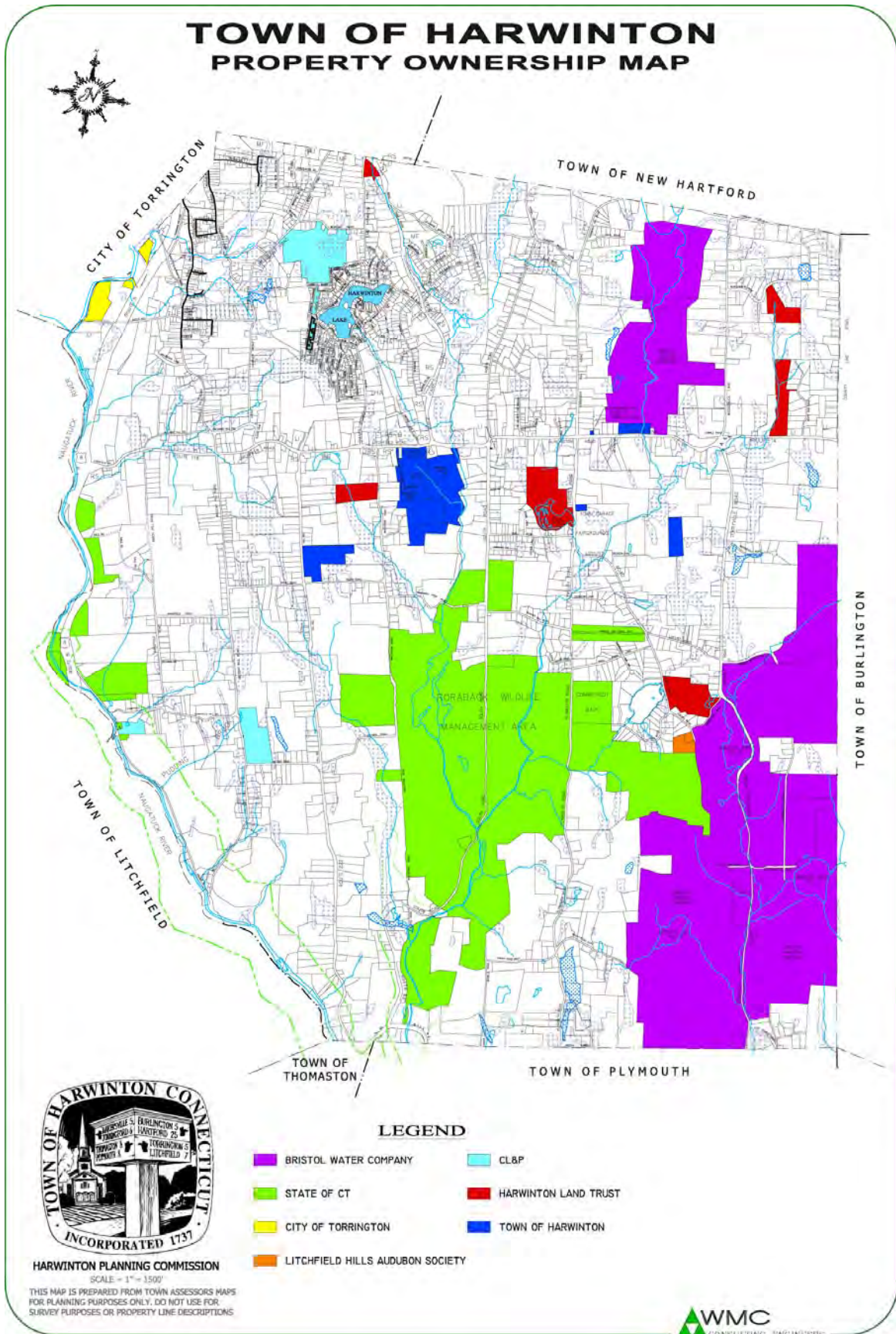


## **APPENDIX**

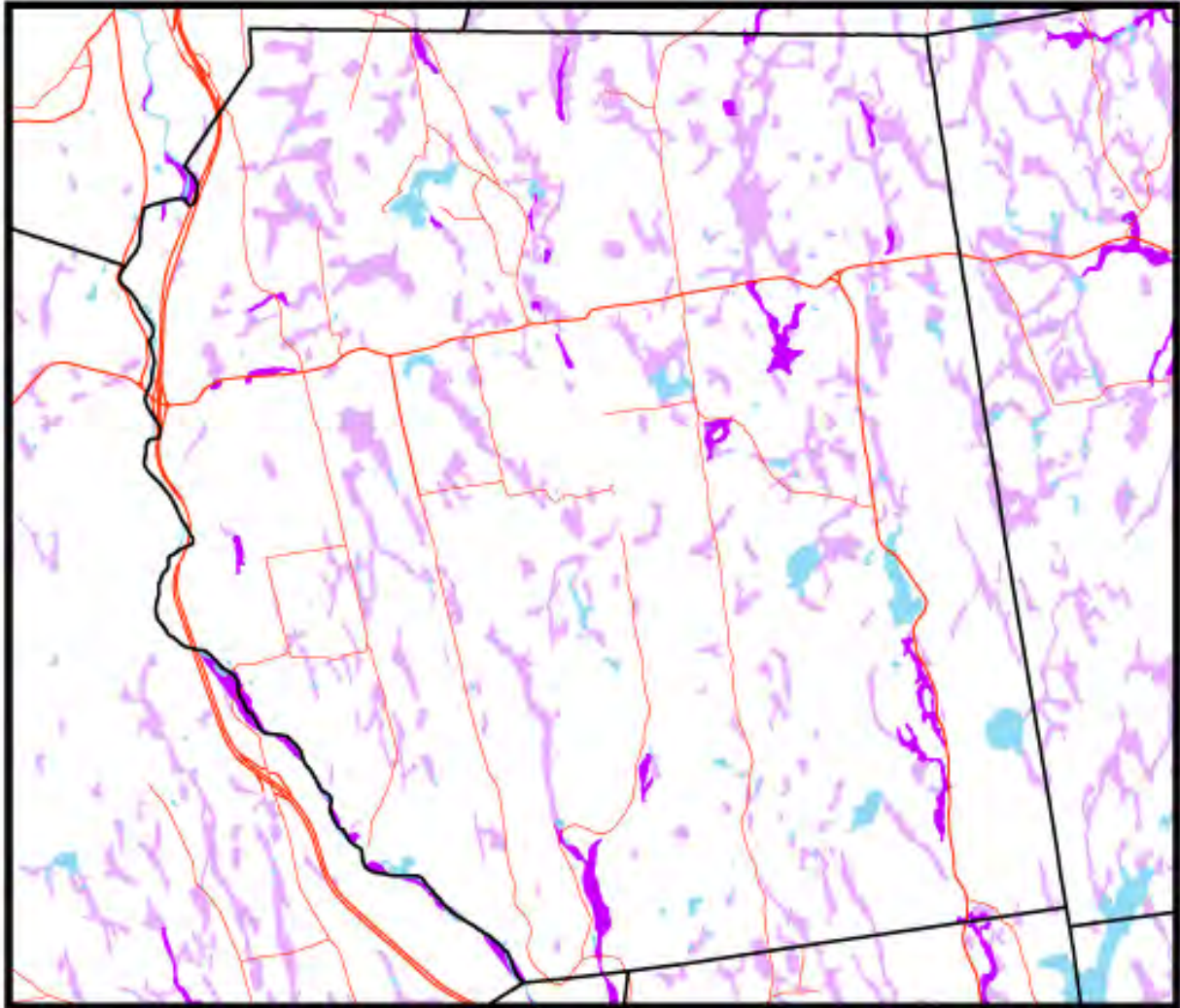
- A-1 HARWINTON OWNERSHIP MAP
- A-2 WETLANDS SOILS
- A-3 SURFACE WATER
- A-4 SURFACE WATER QUALITY
- A-5 REGULATED LANDS MAP
- A-6 2002 LAND COVER
- A-7 NAUGATUCK RIVER GREENWAY (SECTION 1)
- A-8 NAUGATUCK RIVER GREENWAY (SECTION 2)
- A-9 NAUGATUCK RIVER GREENWAY (SECTION 3)
- A-10 HARWINTON DRAINAGE MAP
- A-11 HARWINTON PUBLIC UTILITIES MAP
- A-12 HARWINTON ZONING MAP
- A-13 HARWINTON SLOPES MAP
- A-14 HARWINTON ACREAGE MAP



# Harwinton, CT

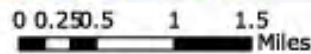
# Wetland Soils

## Community Resource Inventory Map Series



### Legend

- Towns
- Primary Route
- Secondary Route
- Alluvial and floodplain soils
- Poorly/very poorly drained soils
- Water



**More Information:** Visit <http://clear.uconn.edu/projects/cri>

**Data source:** Natural Resources Conservation Service (NRCS) by way of the CT DEP <http://www.ct.gov/dep/gis/>

This project was funded in part by the CT DEP through an EPA Clean Water Act Section 319 Nonpoint Source Grant. NEMO is an educational program of the Center for Land use Education and Research (CLEAR) at the University of Connecticut.

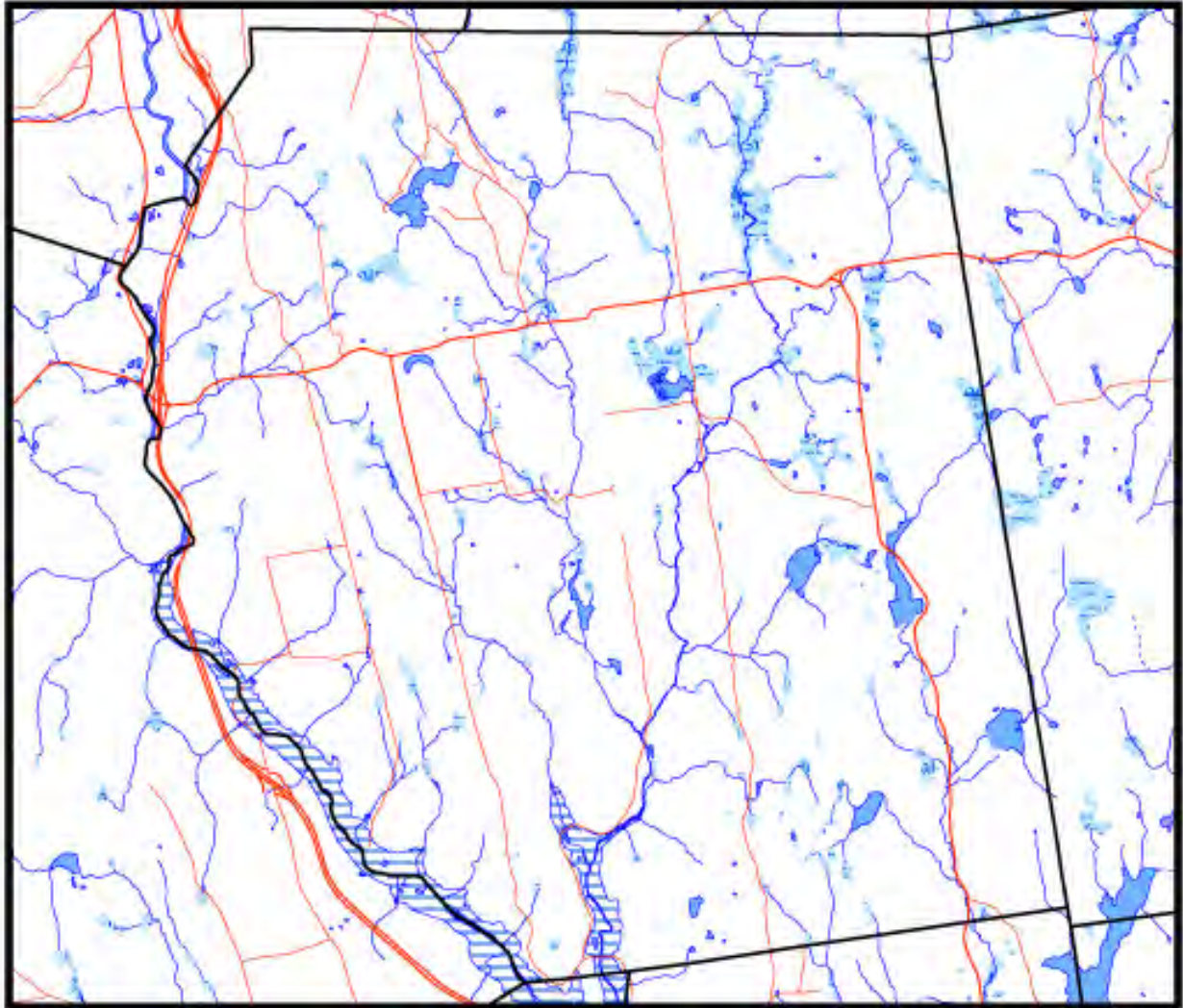
These maps are intended for general information and planning purposes only. They contain no authoritative positional information.



# Harwinton, CT

# Surface Water

## Community Resource Inventory Map Series



### Legend

- Towns
- Primary Route
- Secondary Route
- Flai
- Intermittent Water
- Water/Shore
- Water
- Intermittent Water
- Flats
- Rocks
- Inundated Area
- Marsh on Quad



0 0.250.5 1 1.5 Miles



**More Information:** Visit <http://clear.uconn.edu/projects/cri>

**Data source:** CT DEP <http://www.ct.gov/dep/gis/>

This project was funded in part by the CT DEP through an EPA Clean Water Act Section 319 Nonpoint Source Grant. NEMO is an educational program of the Center for Land use Education and Research (CLEAR) at the University of Connecticut.

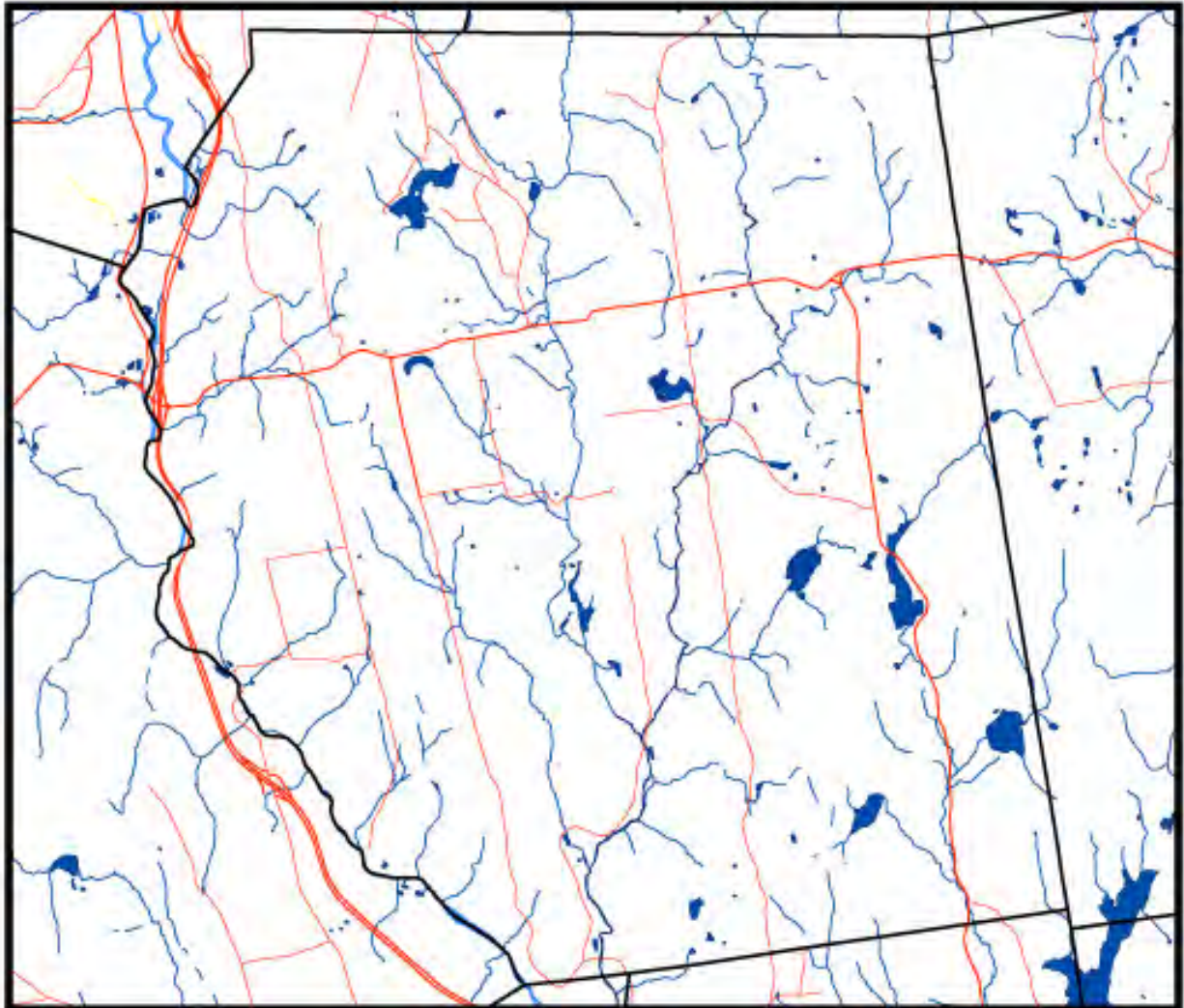
These maps are intended for general information and planning purposes only. They contain no authoritative positional information.



# Harwinton, CT

# Surface Water Quality

## Community Resource Inventory Map Series



### Legend

- Towns
- Primary Route
- Secondary Route
- Surface Water Quality**
- Good to excellent natural quality (A, AA)
- Fishable, swimmable (B)
- Natural quality may be threatened (B/A, B/AA)
- Impaired (C/A, C/B, D/B)
- Coastal good to excellent natural quality (SA)
- Coastal fishable, swimmable (SB)
- Coastal impaired



0 0.2 0.4 0.8 1.2 Miles



**More Information:** Visit <http://clear.uconn.edu/projects/cr>

**Data source:** CT DEP <http://www.ct.gov/dep/gis/>

This project was funded in part by the CT DEP through an EPA Clean Water Act Section 319 Nonpoint Source Grant. NEMO is an educational program of the Center for Land use Education and Research (CLEAR) at the University of Connecticut.

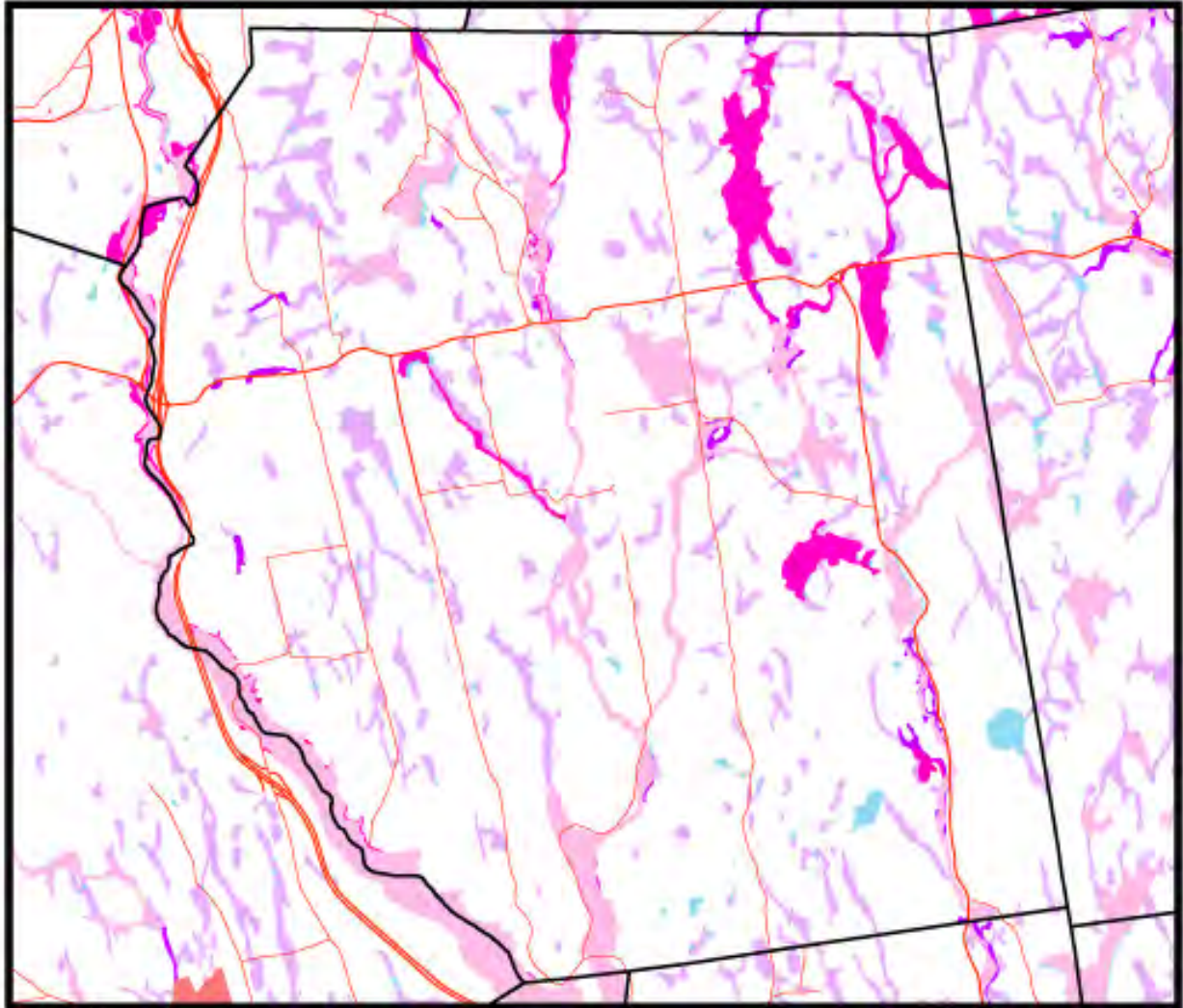
These maps are intended for general information and planning purposes only. They contain no authoritative positional information.



# Harwinton, CT

# Regulated Lands

## Community Resource Inventory Map Series



### Legend

- Towns
- Primary Route
- Secondary Route
- Alluvial and floodplain soils
- Poorly/very poorly drained soils
- Water
- 100 Year Flood Zone
- 500 Year Flood Zone
- Floodway in Zone AE
- Other Flood Areas
- Coastal Boundary
- Adopted
- Final
- Preliminary



0 0.25 0.5 1 1.5 Miles



**More Information:** Visit <http://clear.uconn.edu/projects/cr>

**Data source:** CT DEP <http://www.ct.gov/dep/gis/>

Aquifer Protection Areas updated December 2007.

This project was funded in part by the CT DEP through an EPA Clean Water Act Section 319 Nonpoint Source Grant. NEMO is an educational program of the Center for Land use Education and Research (CLEAR) at the University of Connecticut.

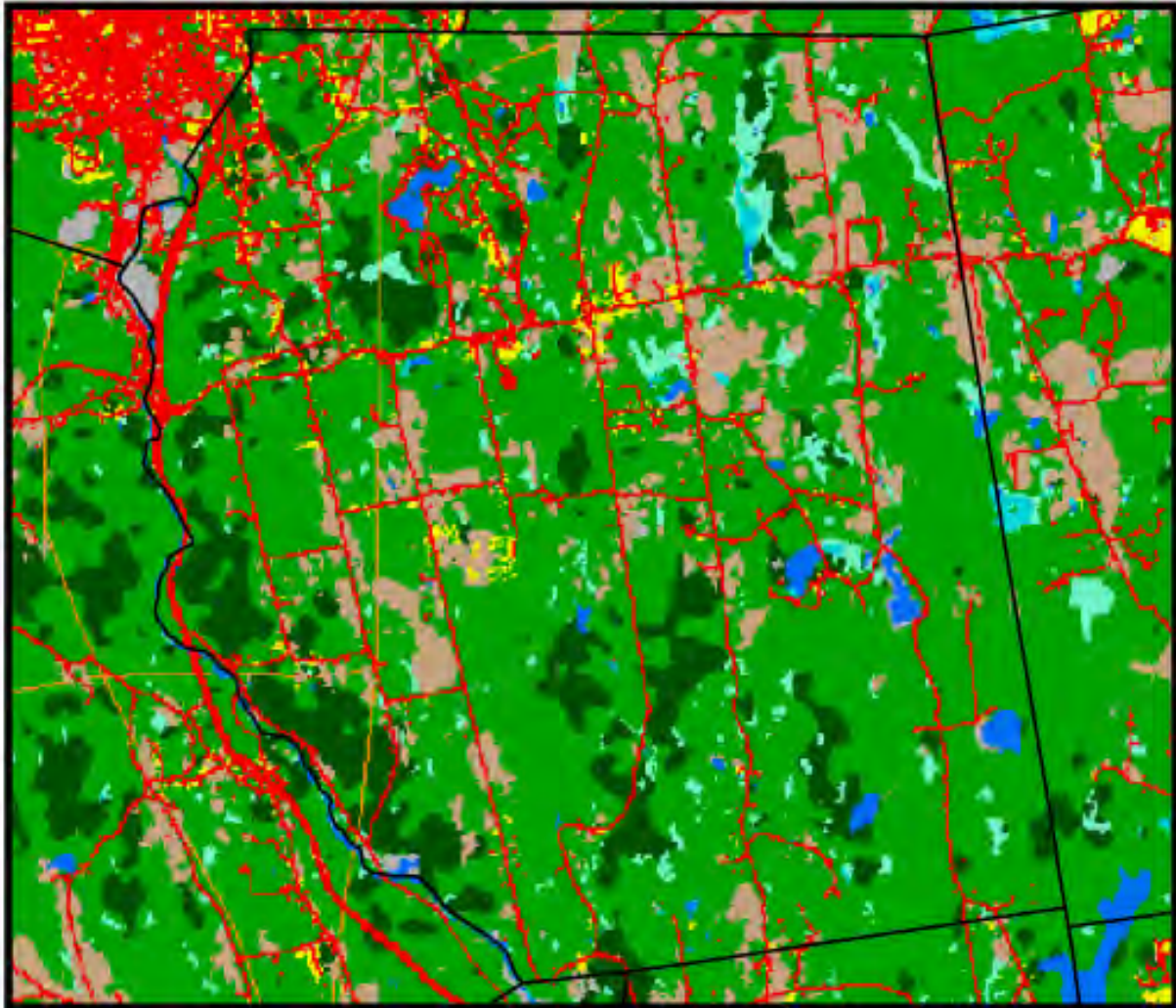
These maps are intended for general information and planning purposes only. They contain no authoritative positional information.



# Harwinton, CT

# Land Cover

## Community Resource Inventory Map Series



### Legend

- Towns
- 2002 Land Cover Classes**
- Developed
- Turf and Grass
- Other Grasses and Ag.
- Deciduous Forest
- Coniferous Forest
- Water
- Non-forested Wetland
- Forested Wetland
- Tidal Wetland
- Barren
- Utility Right-of-way



0 0.2 0.4 0.8 1.2 Miles



**More Information:** Visit <http://clear.uconn.edu/projects/cri>

**Data source:** The 2002 land cover was created by the Center for Land Use Education and Research (CLEAR) at the University of Connecticut. Visit <http://clear.uconn.edu/projects/landscape> for more information.

This project was funded in part by the CT DEP through an EPA Clean Water Act Section 319 Nonpoint Source Grant. NEMO is an educational program of the Center for Land use Education and Research (CLEAR) at the University of Connecticut.

These maps are intended for general information and planning purposes only. They contain no authoritative positional information.

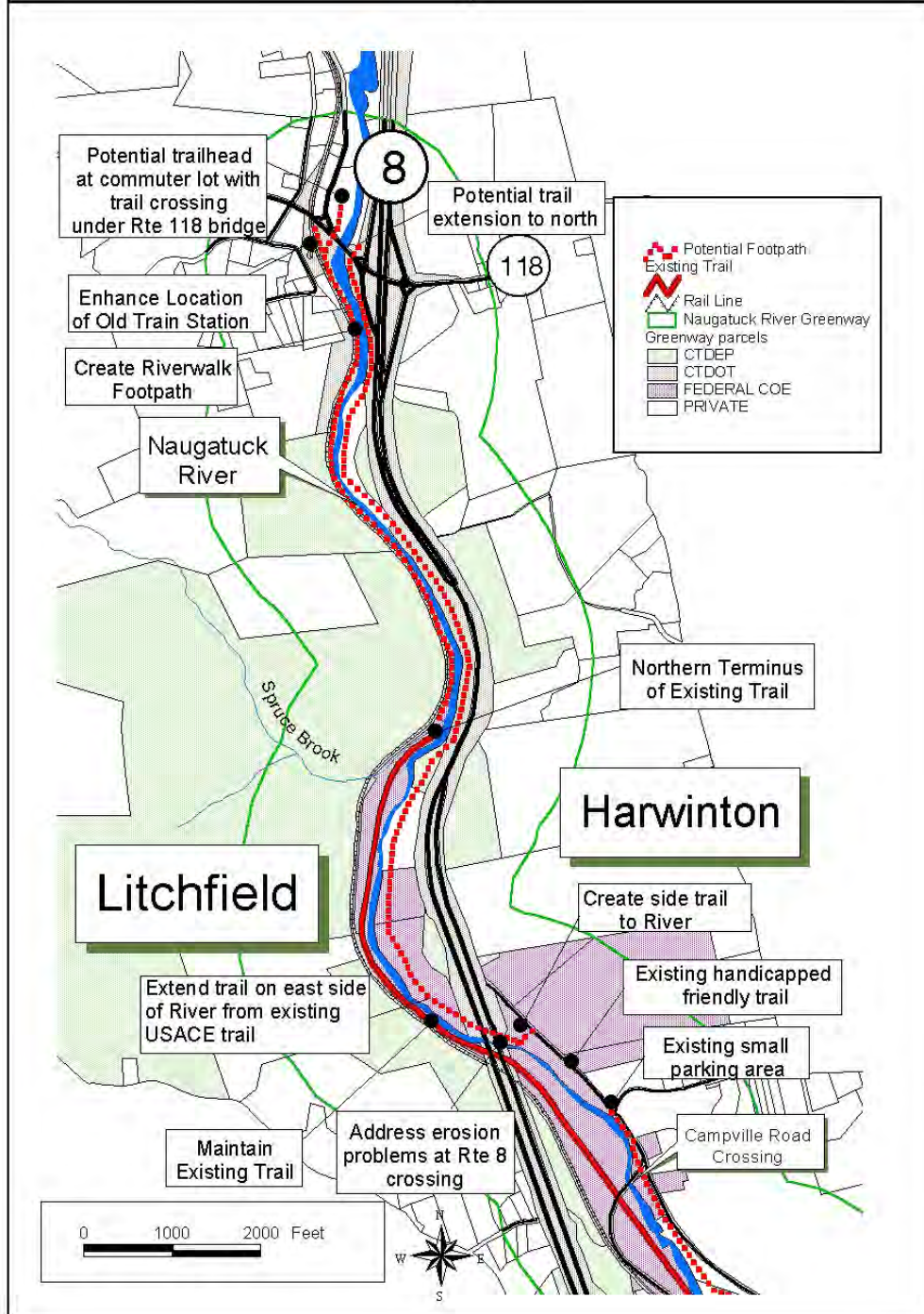


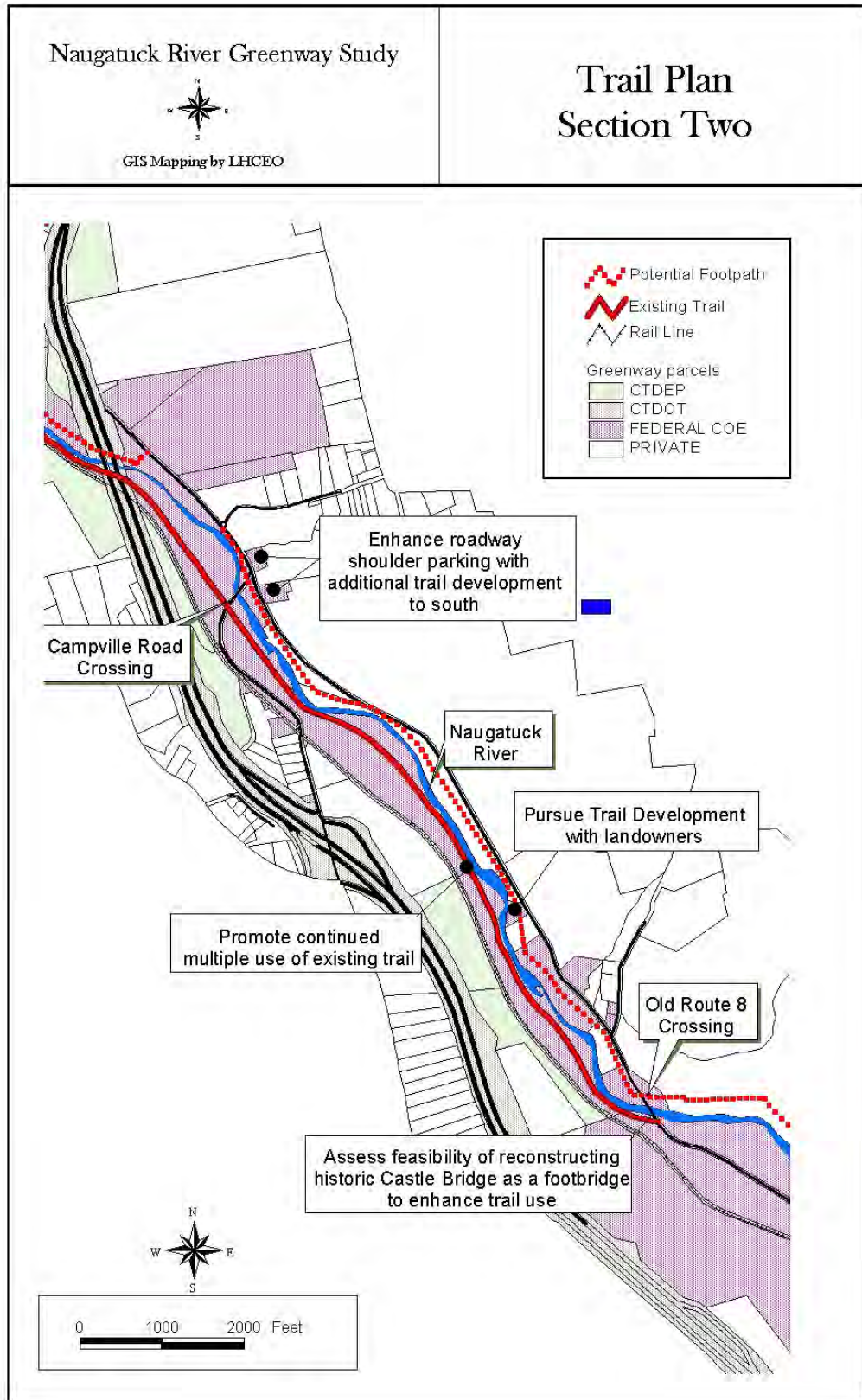
# Naugatuck River Greenway Study

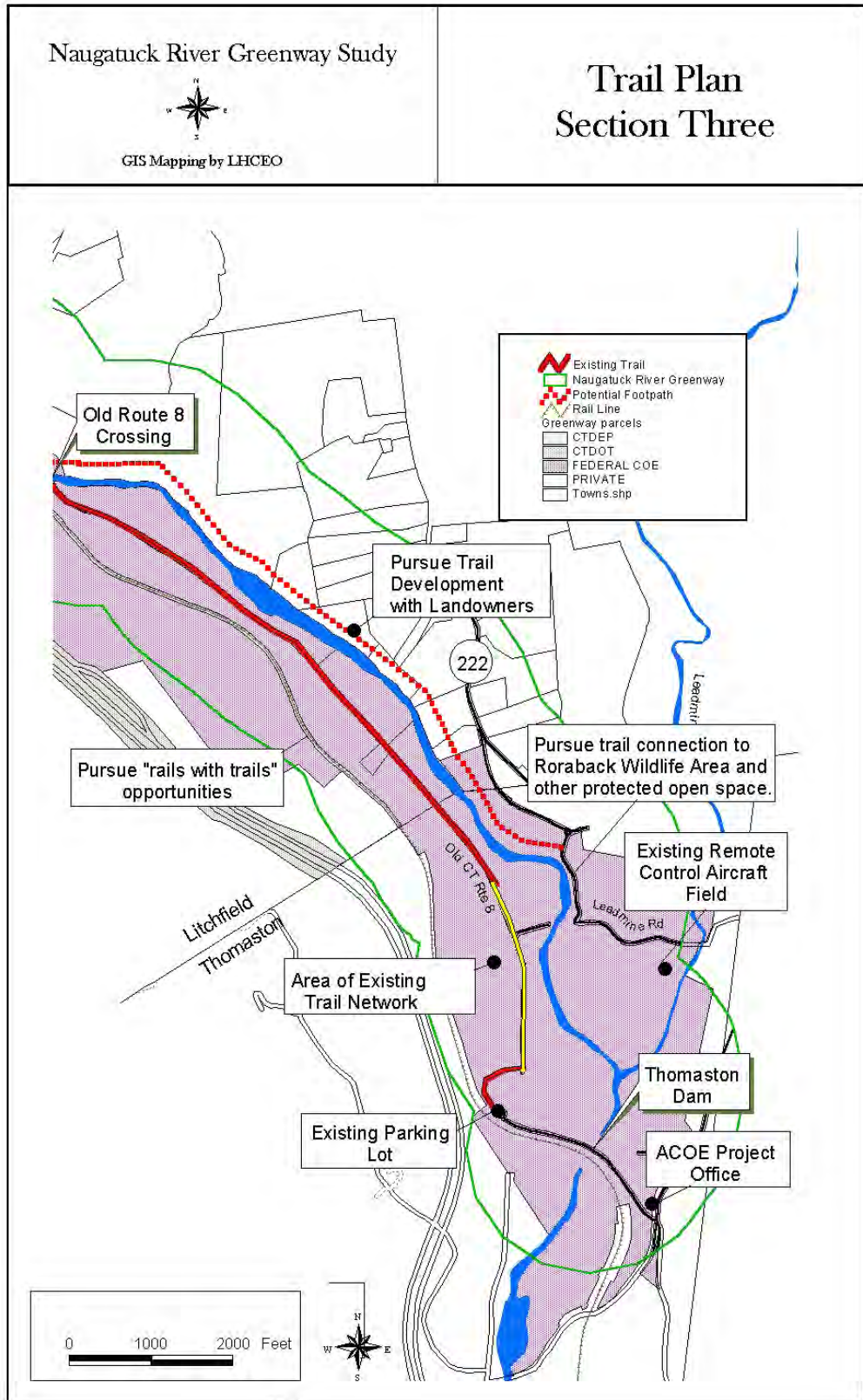


GIS Mapping by LHCEO

# Trail Plan Section One







# TOWN OF HARWINTON NATURAL DRAINAGE AREA MAP



HARWINTON PLANNING COMMISSION  
SCALE = 1" = 1500'

THIS MAP IS PREPARED FROM TOWN ASSESSORS MAPS FOR PLANNING PURPOSES ONLY. DO NOT USE FOR SURVEY PURPOSES OR PROPERTY LINE DESCRIPTIONS

### HOUSATONIC RIVER BASIN

- A NAUGATUCK RIVER SUBREGION DRAINAGE BASIN
- B LEADMINE BROOK SUBREGION DRAINAGE BASIN
- C ROCK BROOK SUBREGION DRAINAGE BASIN



