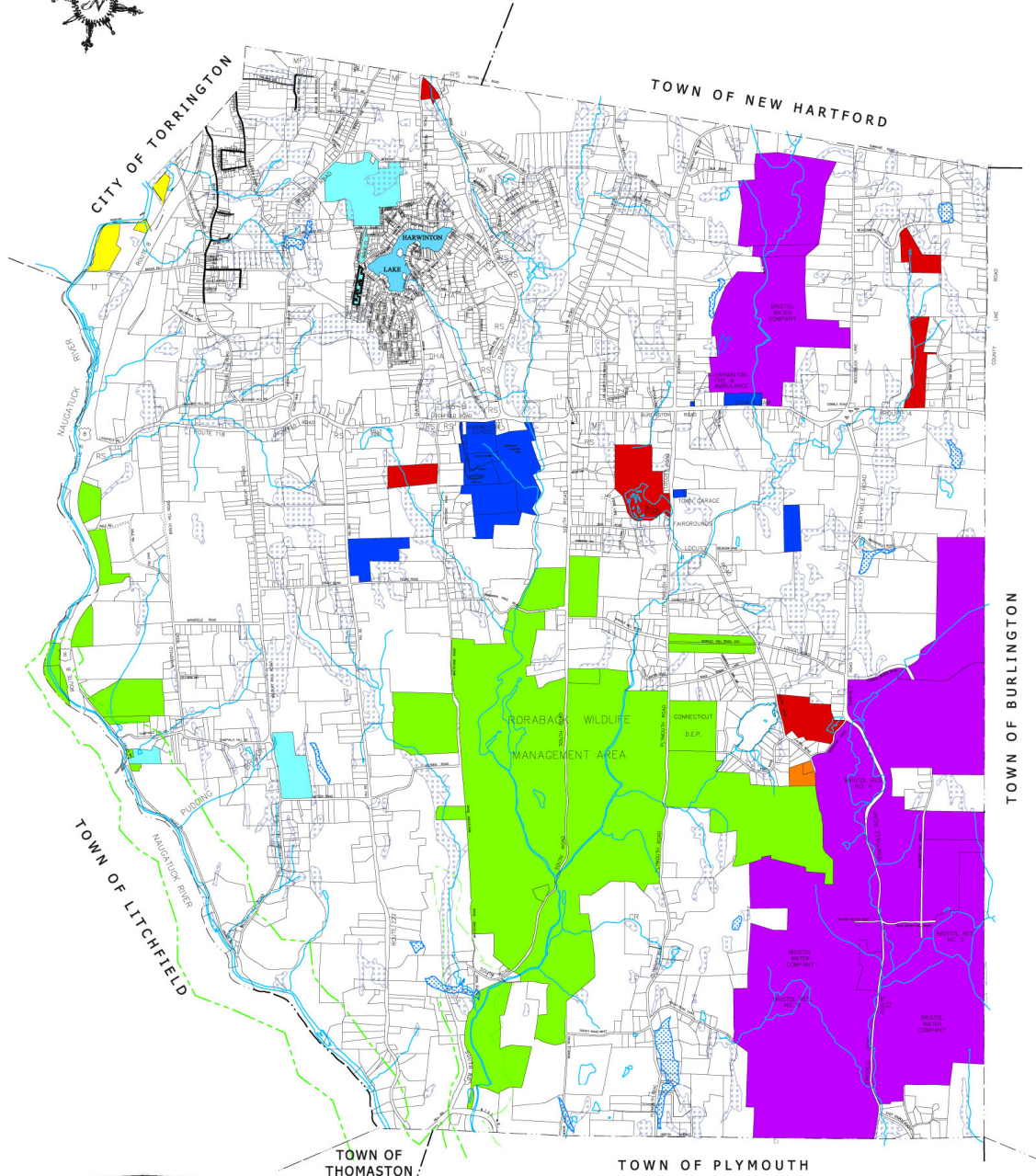


APPENDIX

- A-1 HARWINTON OWNERSHIP MAP
- A-2 WETLANDS SOILS
- A-3 SURFACE WATER
- A-4 SURFACE WATER QUALITY
- A-5 REGULATED LANDS MAP
- A-6 2002 LAND COVER
- A-7 NAUGATUCK RIVER GREENWAY (SECTION 1)
- A-8 NAUGATUCK RIVER GREENWAY (SECTION 2)
- A-9 NAUGATUCK RIVER GREENWAY (SECTION 3)
- A-10 HARWINTON DRAINAGE MAP
- A-11 HARWINTON PUBLIC UTILITIES MAP
- A-12 HARWINTON ZONING MAP
- A-13 HARWINTON SLOPES MAP
- A-14 HARWINTON ACREAGE MAP

TOWN OF HARWINTON PROPERTY OWNERSHIP MAP



HARWINTON PLANNING COMMISSION
SCALE = 1" = 1500'

THIS MAP IS PREPARED FROM TOWN ASSESSORS MAPS
FOR PLANNING PURPOSES ONLY. DO NOT USE FOR
SURVEY PURPOSES OR PROPERTY LINE DESCRIPTIONS

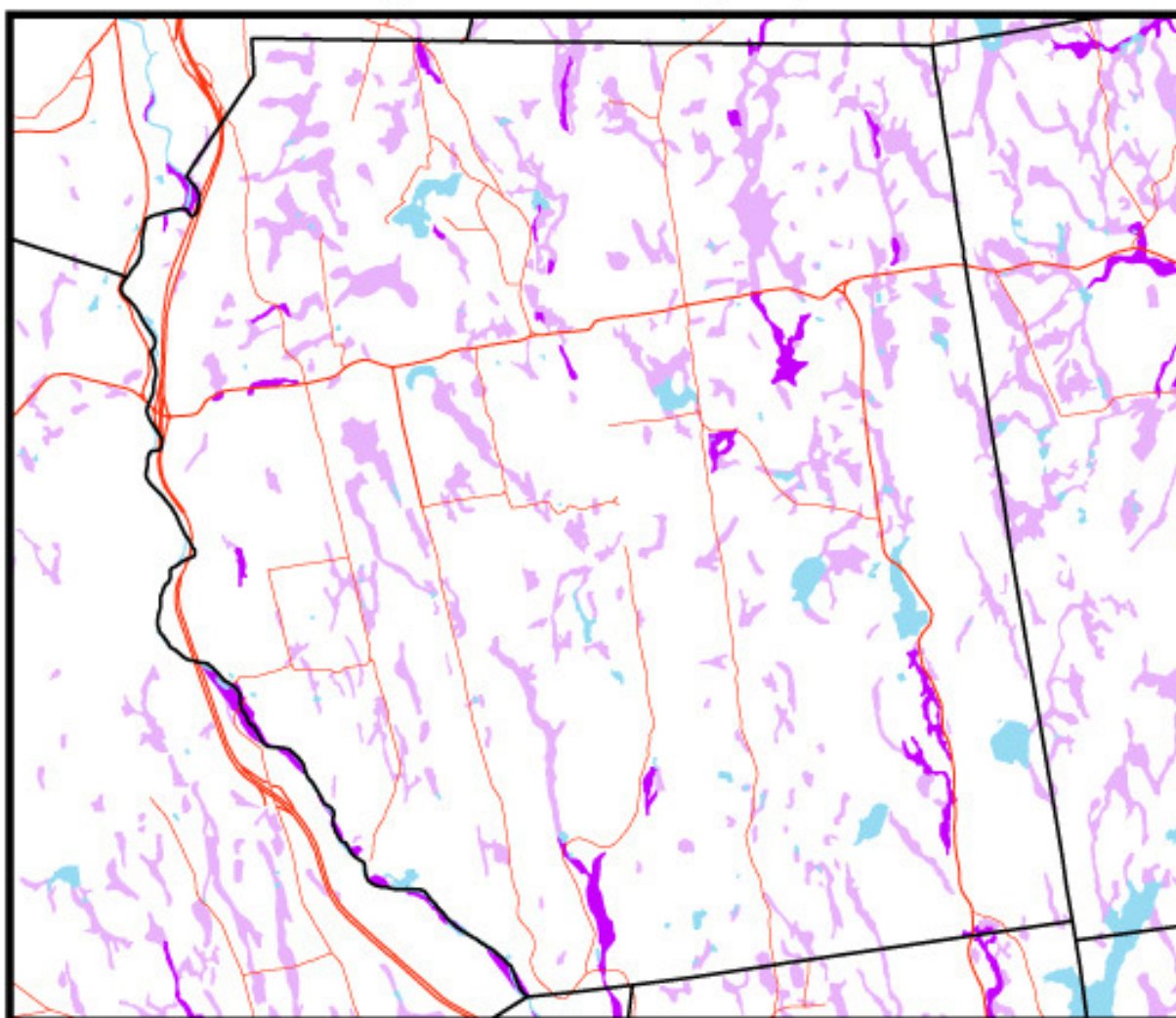
LEGEND

- | | |
|--|---|
| BRISTOL WATER COMPANY | CL&P |
| STATE OF CT | HARWINTON LAND TRUST |
| CITY OF TORRINGTON | TOWN OF HARWINTON |
| LITCHFIELD HILLS AUDUBON SOCIETY | |

Harwinton, CT

Wetland Soils

Community Resource Inventory Map Series



Legend

- Towns
- Primary Route
- Secondary Route
- Alluvial and floodplain soils
- Poorly/very poorly drained soils
- Water



0 0.25 0.5 1 1.5 Miles



More Information: Visit <http://clear.uconn.edu/projects/cr>

Data source: Natural Resources Conservation Service (NRCS) by way of the CT DEP <http://www.ct.gov/dep/gis/>

This project was funded in part by the CT DEP through an EPA Clean Water Act Section 319 Nonpoint Source Grant. NEMO is an educational program of the Center for Land use Education and Research (CLEAR) at the University of Connecticut.

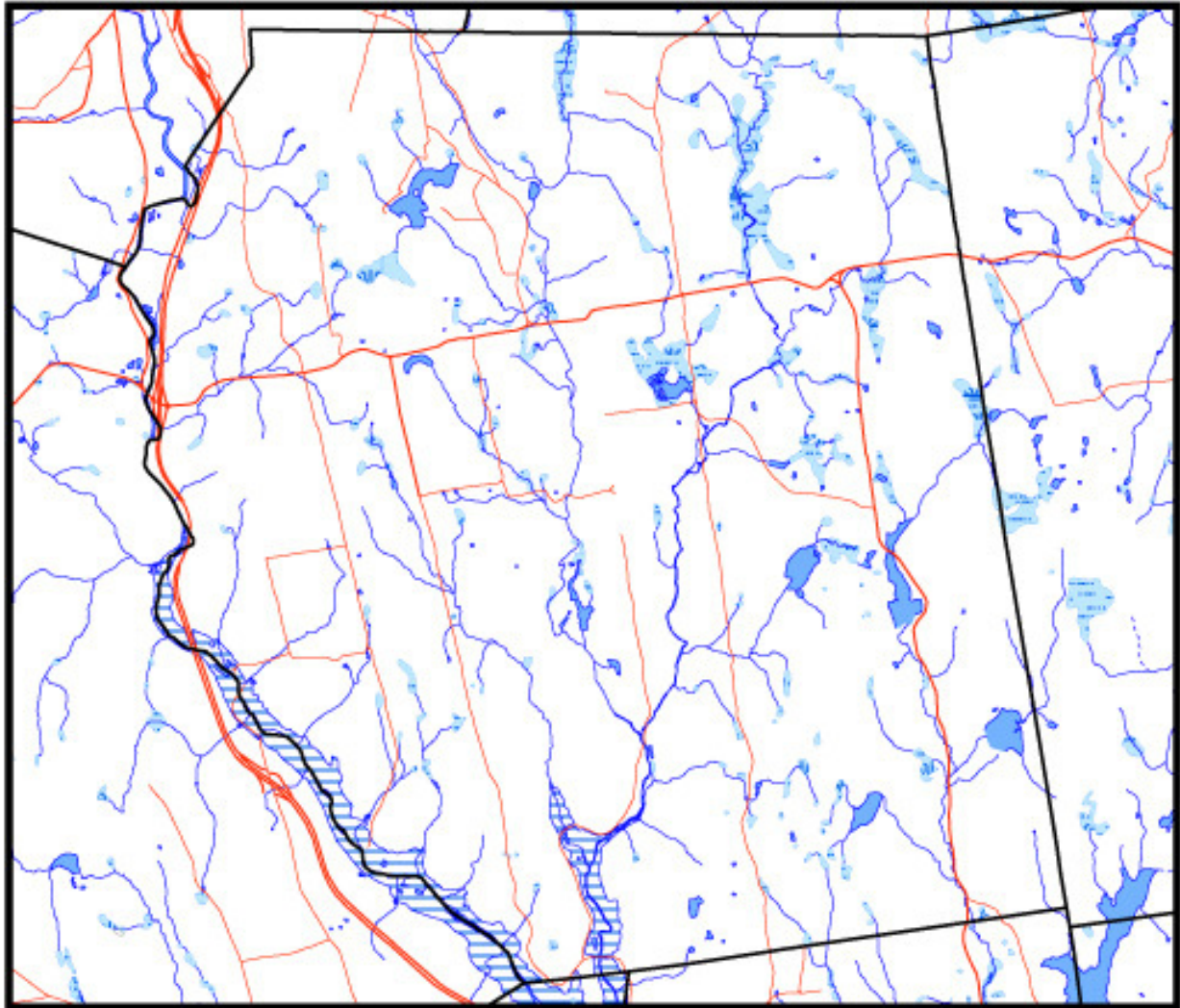
These maps are intended for general information and planning purposes only. They contain no authoritative positional information.



Harwinton, CT

Surface Water

Community Resource Inventory Map Series



Legend

- Towns
- Primary Route
- Secondary Route
- Flat
- Intermittent Water
- Water/Shore
- Water
- Intermittent Water
- Flats
- Rocks
- Inundated Area
- Marsh on Quad



0 0.25 0.5 1 1.5 Miles



More Information: Visit <http://clear.uconn.edu/projects/cr/>

Data source: CT DEP <http://www.ct.gov/dep/gis/>

This project was funded in part by the CT DEP through an EPA Clean Water Act Section 319 Nonpoint Source Grant. NEMO is an educational program of the Center for Land use Education and Research (CLEAR) at the University of Connecticut.

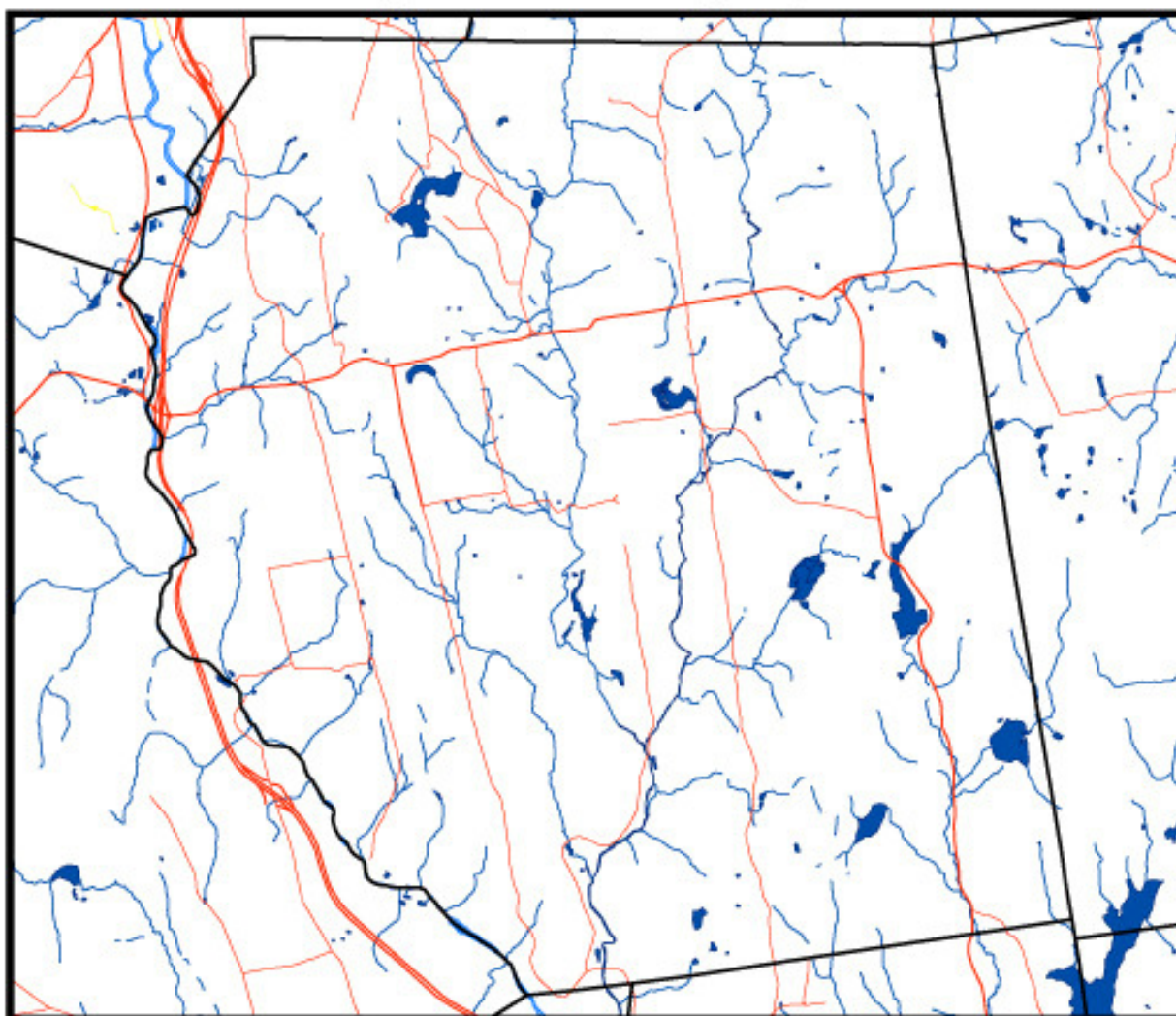
These maps are intended for general information and planning purposes only. They contain no authoritative positional information.



Harwinton, CT

Surface Water Quality

Community Resource Inventory Map Series



Legend

Towns

Primary Route

Secondary Route

Surface Water Quality

Good to excellent natural quality (A, AA)

Fishable, swimmable (B)

Natural quality may be threatened (B/A, B/AA)

Impaired (C/A, C/B, D/B)

Coastal good to excellent natural quality (SA)

Coastal fishable, swimmable (SB)

Coastal impaired



0 0.2 0.4 0.8 1.2 Miles



More Information: Visit <http://clear.uconn.edu/projects/cr>

Data source: CT DEP <http://www.ct.gov/dep/gis/>

This project was funded in part by the CT DEP through an EPA Clean Water Act Section 319 Nonpoint Source Grant. NEMO is an educational program of the Center for Land use Education and Research (CLEAR) at the University of Connecticut.

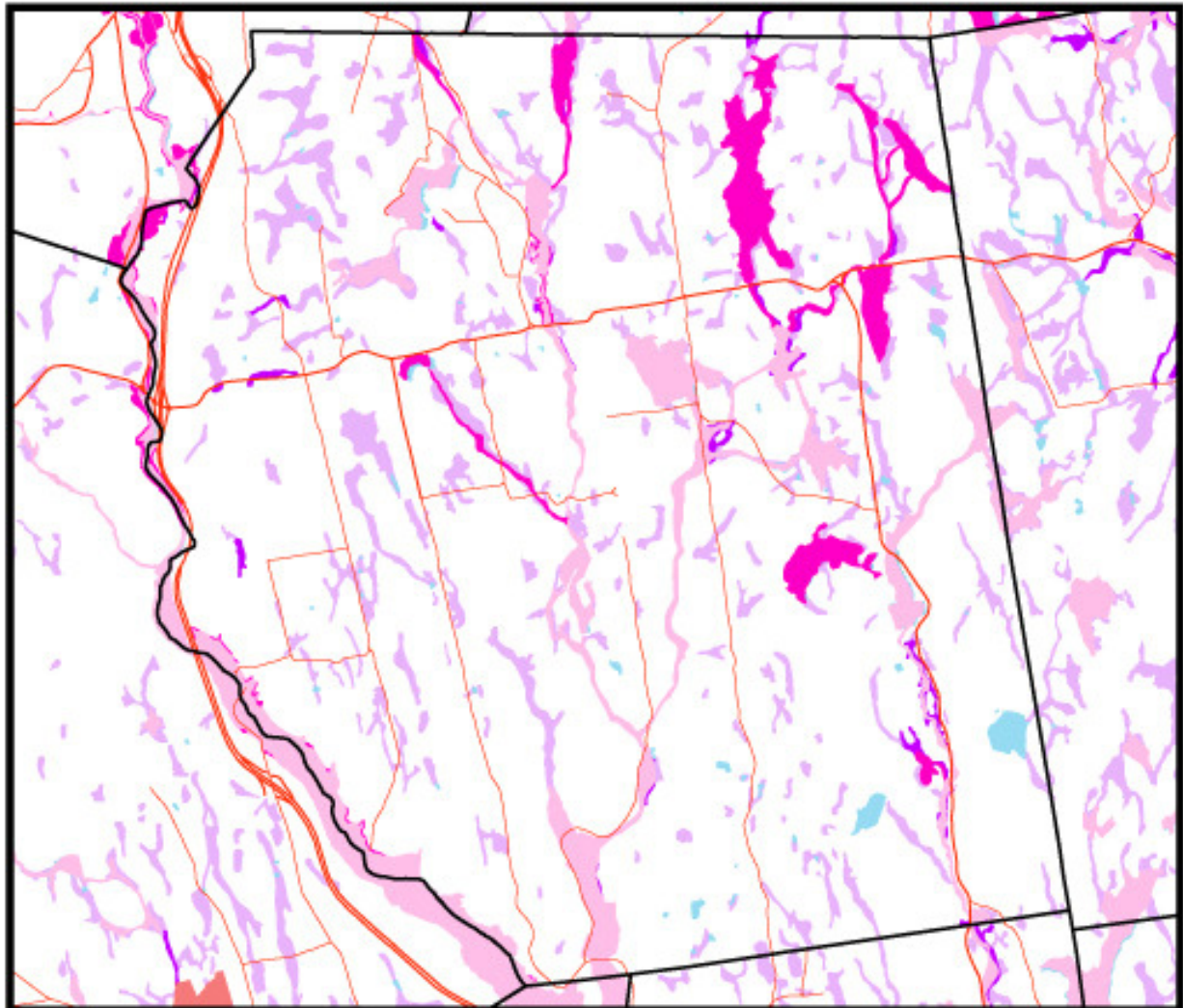
These maps are intended for general information and planning purposes only. They contain no authoritative positional information.



Harwinton, CT

Regulated Lands

Community Resource Inventory Map Series



Legend

- Towns
- Primary Route
- Secondary Route
- Alluvial and floodplain soils
- Poorly/very poorly drained soils
- Water
- 100 Year Flood Zone
- 500 Year Flood Zone
- Floodway in Zone AE
- Other Flood Areas
- Coastal Boundary
- Adopted
- Final
- Preliminary



0 0.25 0.5 1 1.5 Miles



More Information: Visit <http://clear.uconn.edu/projects/cri>

Data source: CT DEP <http://www.ct.gov/dep/gis/>

Aquifer Protection Areas updated December 2007.

This project was funded in part by the CT DEP through an EPA Clean Water Act Section 319 Nonpoint Source Grant. NEMO is an educational program of the Center for Land use Education and Research (CLEAR) at the University of Connecticut.

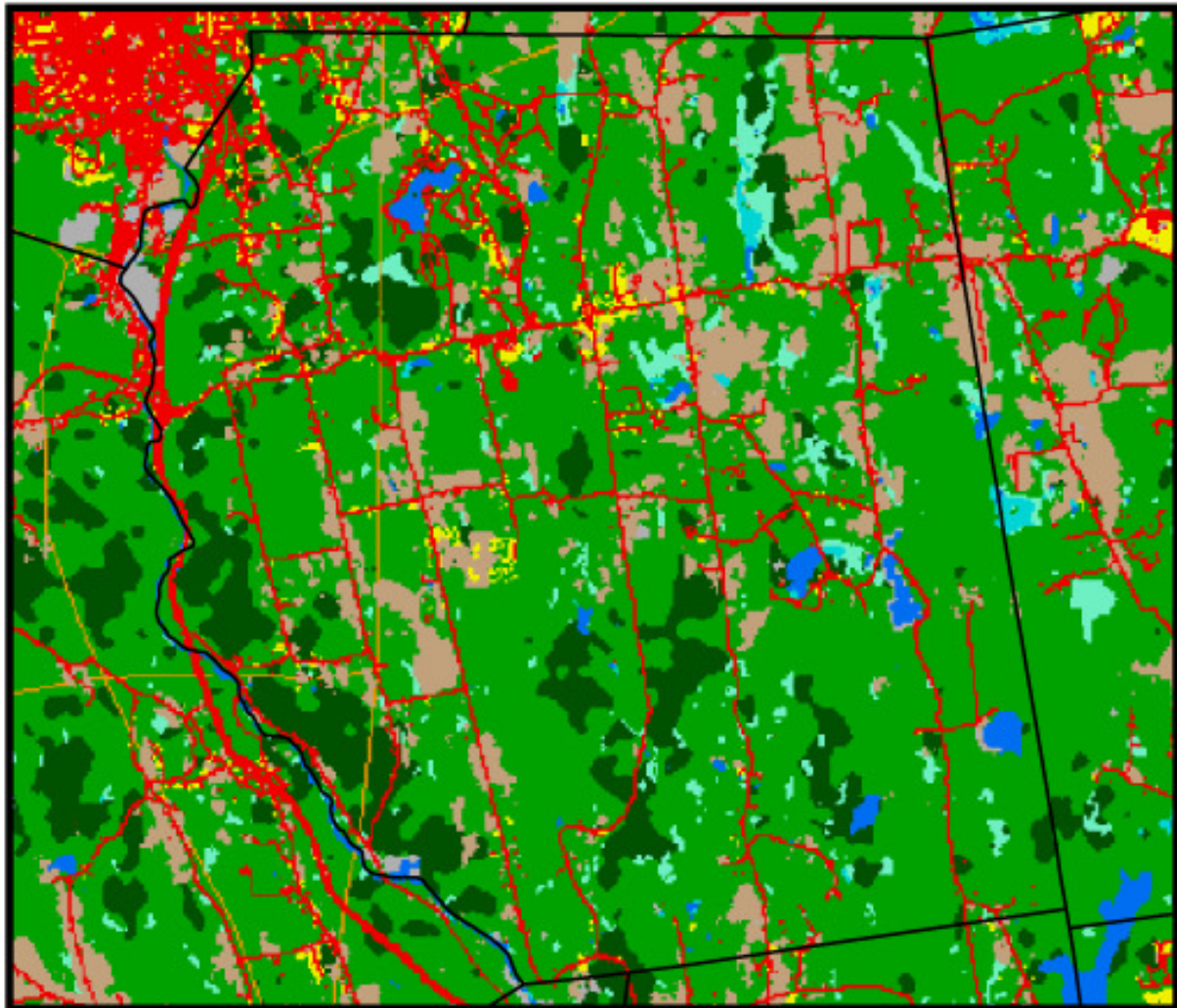
These maps are intended for general information and planning purposes only. They contain no authoritative positional information.



Harwinton, CT

Land Cover

Community Resource Inventory Map Series



Legend

- Towns
- 2002 Land Cover Classes**
- Developed
- Turf and Grass
- Other Grasses and Ag.
- Deciduous Forest
- Coniferous Forest
- Water
- Non-forested Wetland
- Forested Wetland
- Tidal Wetland
- Barren
- Utility Right-of-way



0 0.2 0.4 0.8 1.2
Miles



More Information: Visit <http://clear.uconn.edu/projects/cr>

Data source: The 2002 land cover was created by the Center for Land Use Education and Research (CLEAR) at the University of Connecticut. Visit <http://clear.uconn.edu/projects/landscape> for more information.

This project was funded in part by the CT DEP through an EPA Clean Water Act Section 319 Nonpoint Source Grant. NEMO is an educational program of the Center for Land use Education and Research (CLEAR) at the University of Connecticut.

These maps are intended for general information and planning purposes only. They contain no authoritative positional information.

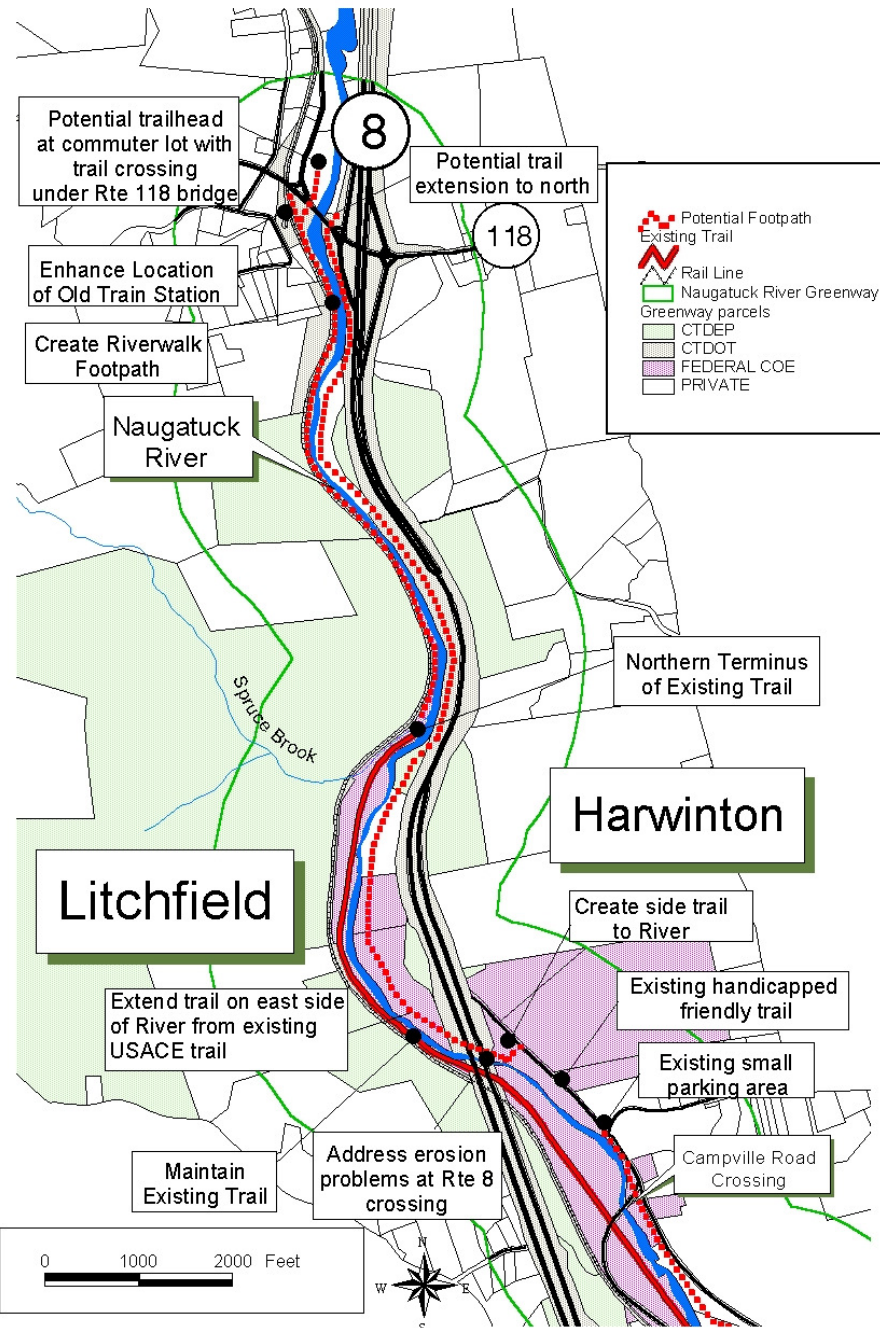


Naugatuck River Greenway Study



GIS Mapping by LHCEO

Trail Plan Section One

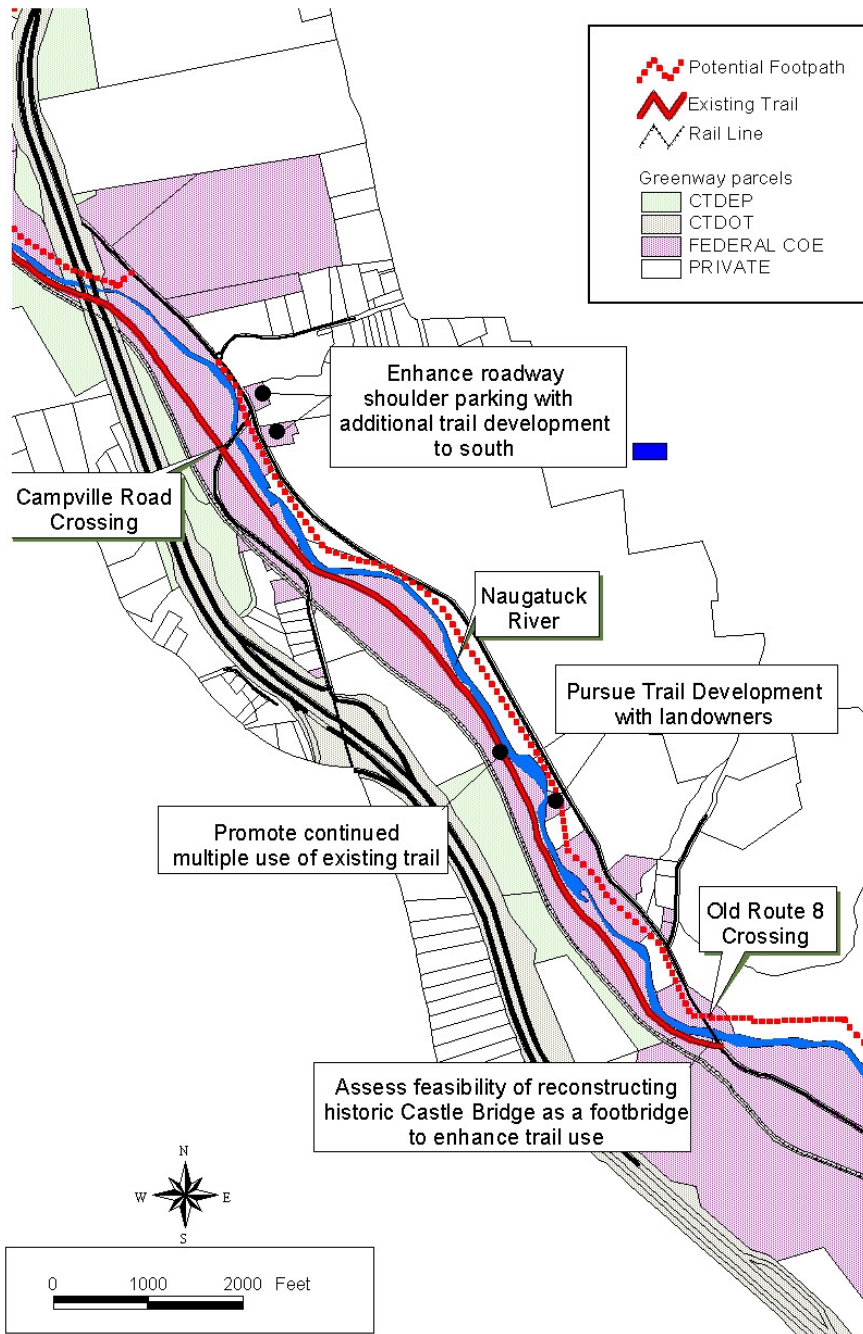


Naugatuck River Greenway Study



GIS Mapping by LHCEO

Trail Plan Section Two

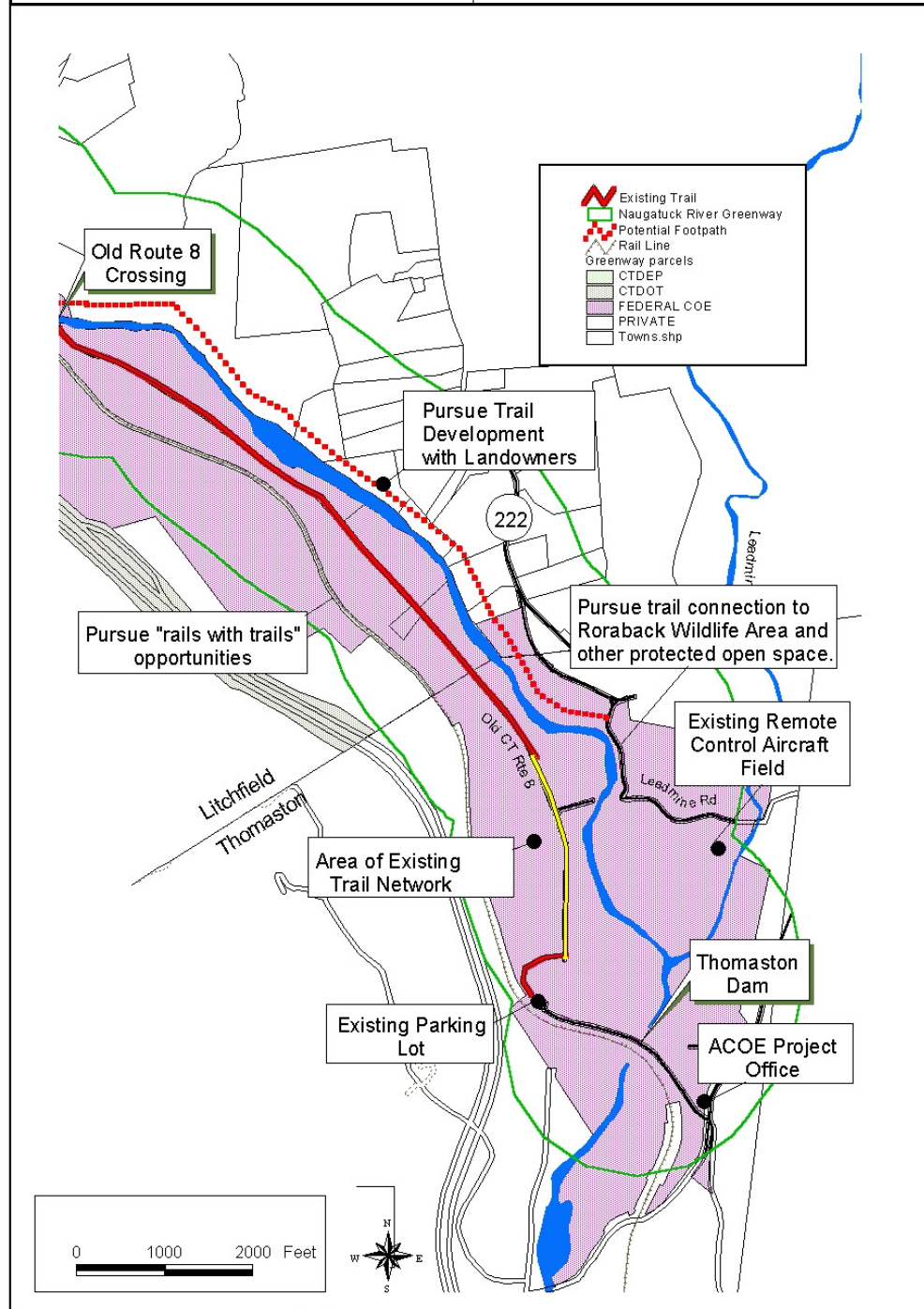


Naugatuck River Greenway Study



GIS Mapping by LHCEO

Trail Plan Section Three



TOWN OF HARWINTON

NATURAL DRAINAGE AREA MAP



HARWINTON PLANNING COMMISSION
SCALE = 1" = 1500'

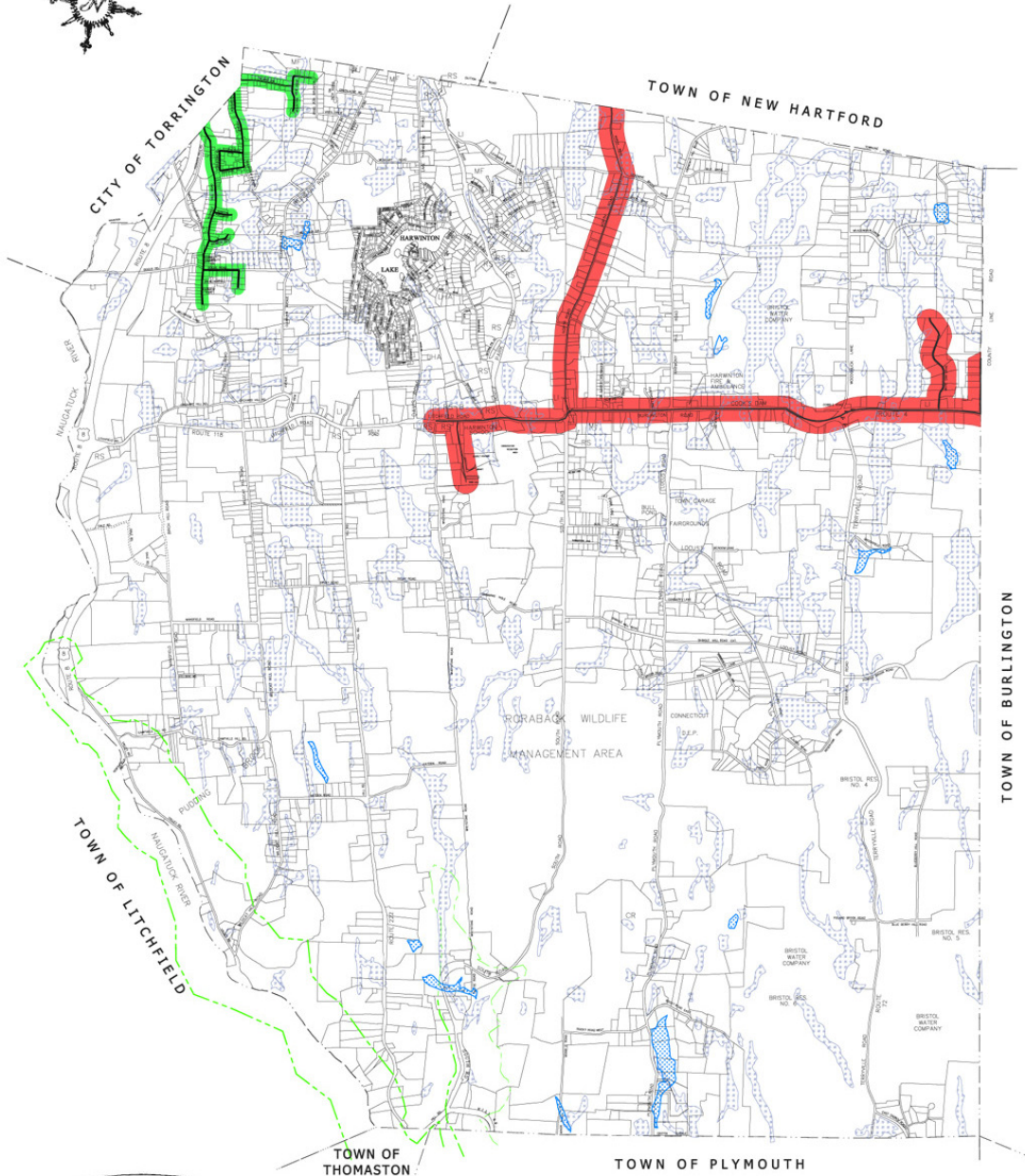
THIS MAP IS PREPARED FROM TOWN ASSESSORS MAPS
FOR PLANNING PURPOSES ONLY. DO NOT USE FOR
SURVEY PURPOSES OR PROPERTY LINE DESCRIPTIONS

HOUSATONIC RIVER BASIN

- A NAUGATUCK RIVER SUBREGION DRAINAGE BASIN
- B LEADMINE BROOK SUBREGION DRAINAGE BASIN
- C ROCK BROOK SUBREGION DRAINAGE BASIN



TOWN OF HARWINTON SEWER/WATER SERVICE MAP



HARWINTON PLANNING COMMISSION
SCALE = 1" = 1500'
THIS MAP IS PREPARED FROM TOWN ASSESSORS MAPS
FOR PLANNING PURPOSES ONLY. DO NOT USE FOR
SURVEY PURPOSES OR PROPERTY LINE DESCRIPTIONS

LEGEND

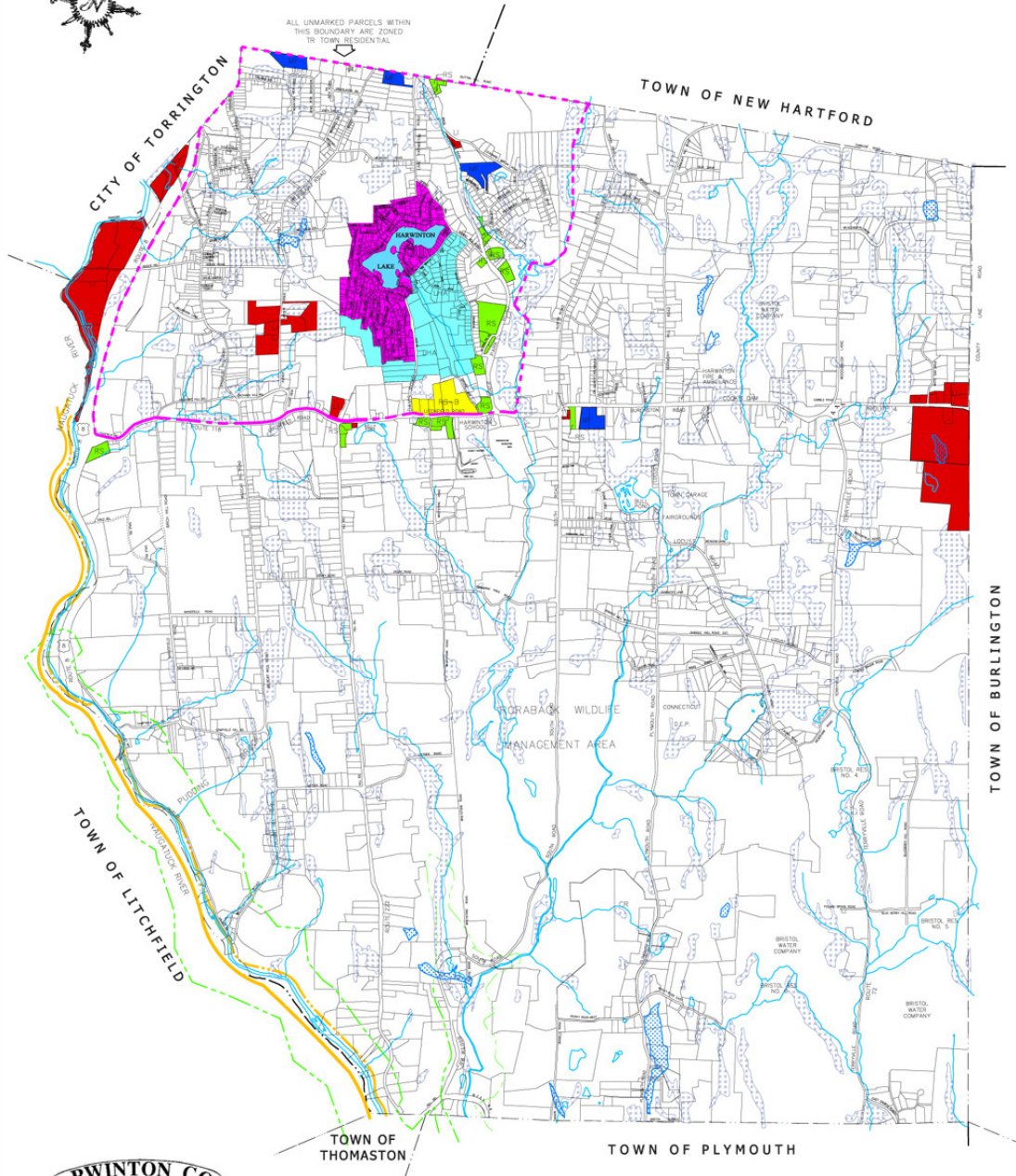
- SEWER SERVICE AREA
- WATER SERVICE AREA



TOWN OF HARWINTON ZONING MAP



ALL UNMARKED PARCELS WITHIN
THIS BOUNDARY ARE ZONED
TR TOWN RESIDENTIAL



HARWINTON PLANNING COMMISSION

SCALE = 1" = 1500'

THIS MAP IS PREPARED FROM TOWN ASSESSORS MAPS
FOR PLANNING PURPOSES ONLY. DO NOT USE FOR
SURVEY PURPOSES OR PROPERTY LINE DESCRIPTIONS

LEGEND

- | | |
|-----------------------------------|-----------------------------------|
| CR - COUNTY RESIDENTIAL ZONE | TR - TOWN RESIDENTIAL |
| LI-A - LIGHT INDUSTRIAL ZONE A | FH - FLOOD HAZARD OVERLAY |
| LI-B - LIGHT INDUSTRIAL ZONE B | POORLY DRAINED SOILS |
| RS-A - RETAIL SERVICE ZONE A | FLOOD DRAINED SOILS |
| RS-B - RETAIL SERVICE ZONE B | RIVERS & STREAMS |
| MF - MULTI FAMILY ZONE | EXISTING NAUGATUCK RIVER GREENWAY |
| LHC - LAKE HARWINTON CHARTER ZONE | PROPOSED NAUGATUCK RIVER GREENWAY |
| LHA - LAKE HARWINTON AREA ZONE | |





THIS MAP IS PREPARED FROM TOWN ASSESSORS MAPS
FOR PLANNING PURPOSES ONLY. DO NOT USE FOR
SURVEY PURPOSES OR PROPERTY LINE DESCRIPTIONS

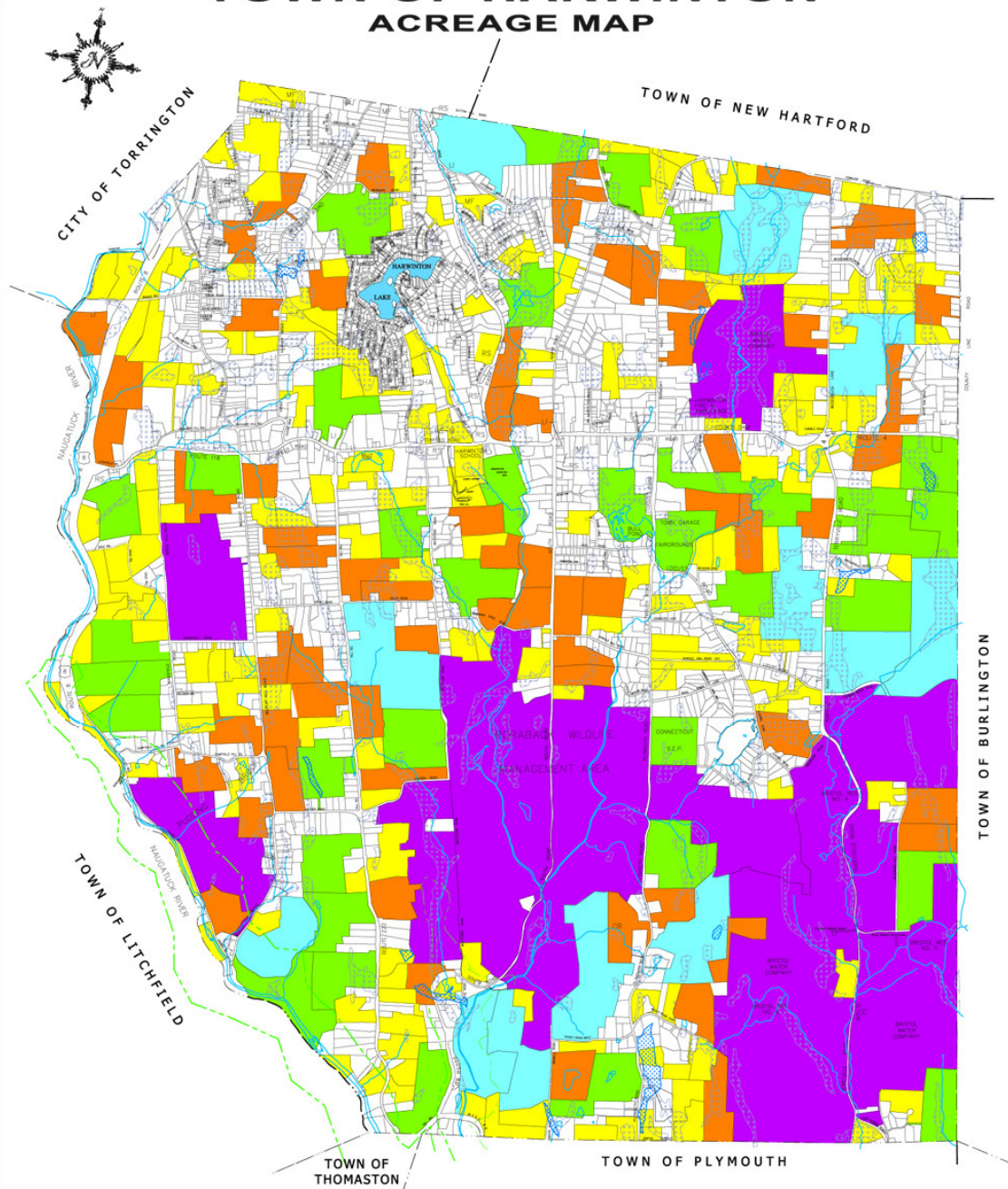
SLOPES GREATER THAN 25%



SLOPES GREATER THAN 25%



TOWN OF HARWINTON ACREAGE MAP



HARWINTON PLANNING COMMISSION
SCALE = 1" = 1500'

THIS MAP IS PREPARED FROM TOWN ASSESSORS MAPS
FOR PLANNING PURPOSES ONLY. DO NOT USE FOR
SURVEY PURPOSES OR PROPERTY LINE DESCRIPTIONS

LEGEND

- 10-25 ACRES
- 25-50 ACRES
- 50-100 ACRES
- 100-200 ACRES
- 200+ ACRES